

## RT 44

WAND- UND SPIEGELLEUCHTEN FÜR INNEN- UND AUSSENÄUME  
WALL AND MIRROR LUMINAIRES FOR INDOOR AND OUTDOOR USE

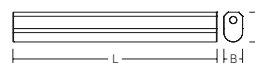
# RT44

- Zeitloses Design
- Einfache Montage mittels Plug & Play
- 30 % Energieeinsparung zu konventionellen Bestückungen
- Hohe Schutzart IP44 für den Einsatz im Nassbereich
- Basisleuchte mit 600 mm ideal geeignet für Spiegelmaß
- Waagerechte und senkrechte Montage möglich
- LED Lebensdauer 50.000 h (L70, B10)
- Farbtemperatur 3000 K und 4000 K
- Ra 80

- Timeless design
- Easy installation (Plug and play)
- Energy saving 30 % compared to conventional light sources
- Type of protection IP44 for use in moist/humid environments
- Version of 600 mm perfect for mirrors
- Horizontal and vertical mounting
- LED service life: approx 50,000 h (L70, B10)
- Colour temperature 3000 K and 4000 K
- Colour rendering Ra 80



**LED**



Schutzart: **IP 44**, IP 21 bei Verwendung von Euroflachstecker  
Schutzklasse: I

Armatur Aluminium pulverbeschichtet.  
Diffusor Kunststoff (Polycarbonat) opal.  
Endkappen Kunststoff (Polycarbonat), schlagzäh.

Entspricht der Badezimmer-Norm DIN VDE 0100-701 (Okt. 2008) Feuchtraum 2.

Lieferbare Farbe: 2 = weiß

Type of Protection: **IP44**, IP 21 if European flat plugs are used  
Protection Class: I

Base: aluminium, powder-coated. Diffuser: plastic (polycarbonate), opal. End caps: plastic (polycarbonate), shock-resistant.

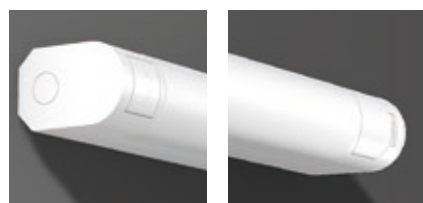
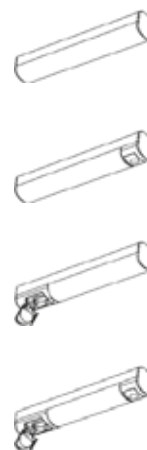
Damp-proof according to standard DIN VDE 0100-701 (Oct. 2008) for moist/humid environments 2

Available colour: 2 = white



Bestellnummer   Reference number	Abmessungen   Dimensions	Lampe   Lamp	Lichtfarbe   Light colour	Leuchtenlichtstrom   Luminaire flux	Systemleistung   System power	EEK   EEC	€ brutto ohne MwSt.   € gross without VAT
----------------------------------	--------------------------	--------------	---------------------------	-------------------------------------	-------------------------------	-----------	---

Linienleuchten   Linear light fittings			Preisgruppe 11   Price category 11				
451168.002	L 600, B 55, H 87	LED	830	910 lm	10 W	A+   A+	189,00
451168.002.1	L 600, B 55, H 87	LED	840	970 lm	10 W	A+   A+	189,00
451169.002	L 900, B 55, H 87	LED	830	1370 lm	15 W	A+   A+	269,00
451169.002.1	L 900, B 55, H 87	LED	840	1430 lm	15 W	A+   A+	269,00
<b>mit Schalter   with push button switch</b>							
451170.002	L 644, B 55, H 87	LED	830	910 lm	10 W	A+   A+	229,00
451170.002.1	L 644, B 55, H 87	LED	840	970 lm	10 W	A+   A+	229,00
451171.002	L 944, B 55, H 87	LED	830	1370 lm	15 W	A+   A+	309,00
451171.002.1	L 944, B 55, H 87	LED	840	1430 lm	15 W	A+   A+	309,00
<b>mit Steckdose   with socket</b>							
451172.002	L 677, B 55, H 87	LED	830	910 lm	10 W	A+   A+	229,00
451172.002.1	L 677, B 55, H 87	LED	840	970 lm	10 W	A+   A+	229,00
451173.002	L 977, B 55, H 87	LED	830	1370 lm	15 W	A+   A+	309,00
451173.002.1	L 977, B 55, H 87	LED	840	1430 lm	15 W	A+   A+	309,00
<b>mit Schalter und Steckdose   with push button switch and with socket</b>							
451174.002	L 721, B 55, H 87	LED	830	910 lm	10 W	A+   A+	249,00
451174.002.1	L 721, B 55, H 87	LED	840	970 lm	10 W	A+   A+	249,00
451175.002	L 1021, B 55, H 87	LED	830	1370 lm	15 W	A+   A+	329,00
451175.002.1	L 1021, B 55, H 87	LED	840	1430 lm	15 W	A+   A+	329,00



## Vergleich | Comparison

LED : konventionelle Lampen  
LED : conventional lamps

LED 10 W ≈  
1 x 14 W T16 (16 W EVG | EB)

LED 15 W ≈  
1 x 21 W T16 (24 W EVG | EB)