



Low voltage AC drives

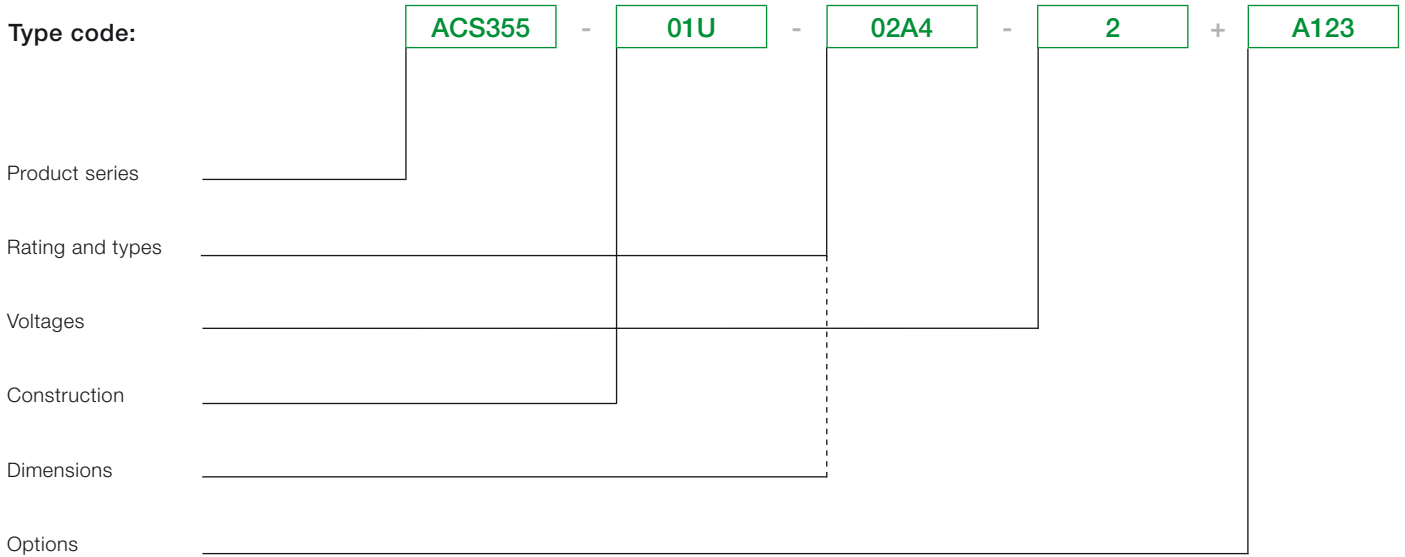
ABB general machinery drives ACS355 0.5 to 30 hp / 0.37 to 22 kW Catalog

Two ways to select your drive

Choice 1: Simply contact your local ABB drives sales office and let them know what you want. Use page 3 as a reference section for more information.

OR

Choice 2: Build up your own ordering code using the simple 7-step approach below. Each step is accompanied by a reference to a page that is filled with useful information.



Contents

ABB general machinery drives, ACS355

ABB general machinery drives	4
Features, advantages and benefits	4
Ratings and types	6
Type code	6
Voltages	6
Construction	6
Technical data	7
Dimensions and weights	8
Cabinet-mounted drives (IP20 UL Open)	8
Wall-mounted drives (NEMA 1/UL Type 1)	8
Wall-mounted drives (IP66/UL Type 4X)	8
Cooling and fuses	9
Control connections	10
Connection examples	10
Options	11
How to select options	11
User interfaces	12
Machine interfaces	13
Extension modules	13
Protection and installation	13
DriveWindow Light	14
Drive Browser	15
FlashDrop tool	16

ABB general machinery drives

ACS355

01U

02A4

2

A123

ABB general machinery drives

The ABB general machinery drives are designed to be the fastest drives to install, parameter-set and commission. They are highly compact and cost effective. Equipped with cutting-edge intelligence and safety capability the drives are designed specifically to meet the production and performance needs of system integrators, original equipment manufacturers (OEMs) and panel builders, as well as the requirements of end users in a broad range of applications.

Applications

ABB general machinery drives are designed to meet the requirements of an extensive range of machinery applications. The drives are ideal for lifting, food and beverage, material handling, textile, printing, rubber and plastics, and wood-working applications.

Highlights

- Exceptionally compact drives and uniform design
- Quick commissioning with application macros and panel assistants
- Safe torque-off function (SIL3) as standard
- Sensorless vector control
- Built-in braking chopper
- High protection class variants for harsh environments
- Permanent magnet and induction motor control
- Torque memory for lifting applications
- Common DC bus
- 100% background compatibility with ACS350
- 600 Hz maximum output frequency

Feature	Advantage	Benefit
Worldwide availability and service	Drives are available worldwide and permanently stocked in four regions. Dedicated global service and support network that is one of the largest in the industry.	Fast and reliable delivery with dedicated support to any country in the world.
Broadest power range in its class from 0.5 to 30 hp	Drive series covers all the typical needs of machine builders with a single family of machinery drive.	Cost savings as machine builders need to choose only one drive series.
Exceptionally compact drives and uniform design	Drive has the highest power density in its class at 2.8 kW/dm ³ . All frame sizes share the same depth and height facilitating multiple drive solutions and cabinet installations.	Space savings in restricted spaces.
Safe torque-off function (SIL3) as standard	Built-in and certified function that is used for prevention of an unexpected start-up and other stopping related functions.	Reduces the need for external safety components Helps machine builders to fulfill the requirements of Machinery Directive 2006/42/EC.
Sequence programming	Simple drive control logic, with up to eight pre-set sequences of operations, is created in minutes with built-in sequence programming.	Reduces the need for external PLC components.
Application macros and control panel's assistants	Pre-defined I/O configurations containing macros such as 3-wire, PID-control and motor potentiometer macro. Different assistants help set parameters for different functions such as drive start-up, motor set-up or PID control.	Enables quick commissioning of a drive.
FlashDrop tool	A pre-defined machine parameter set, from selection of up to 20, can be downloaded in seconds to a drive without powering the drive. The FlashDrop tool is easy to use and no specialized drives knowledge is required.	Fast, easy and reliable pre-configuration of drives for high-volume machine builders.
Speed compensated stop	A feature for applications that require precision stopping that is independent of variations in process speed.	Improved production flow and cost saving of a built-in feature.
Product variant for demanding environments with IP66/UL Type 4X protection classes	No need to design special enclosure for application that requires a high ingress protection. NSF certified.	Time and cost savings.
Sensorless vector control	Accurate motor control without a feedback device.	Cost saving of a reduced component.

ABB general machinery drives

ACS355 - 01U - 02A4 - 2 + B063

High protection class drive

A range of ABB general machinery drives with IP66 and UL Type 4X protection classes is designed to excel in the harshest and most demanding of conditions.

Designed for the food and beverage, textile, ceramics, pulp and paper and water and waste water industries, the drives are suitable for screws, mixers, pumps, fans and conveyers especially where the machine is exposed to dust, moisture and cleaning chemicals. The heat sink's cooling fins are completely open from top to bottom, which allows easy washing to ensure no dirt adheres to the surfaces. A user control panel housed within a plastic window is designed to resist moist and dusty atmospheres. Furthermore, the cooling fan is located inside the drive, thereby eliminating the need for an external cooling fan and the subsequent maintenance of external moving parts. The wall mounted drive can be located close to the process and the operator. The drive features the assistant control panel as standard.

The drive's hygienic design and use of materials meeting current hygiene standards, means that the drive traps no bacteria and can withstand frequent washing. The drive is certified by NSF.

Mains connection, high protection class drive

Voltage and power range	3-phase, 200 to 240 V \pm 10% 0.5 to 5 hp (0.37 to 4 kW) 3-phase, 380 to 480 V \pm 10% 0.5 to 10 hp (0.37 to 7.5 kW)
--------------------------------	---

Environmental limits, high protection class drive

Ambient temperature	14 to 104 °F (-10 to 40 °C), no frost allowed
Degree of protection	IP66/UL Type 4X, indoor use only IP69K with compatible cable glands

Product compliance, high protection class drive

Low Voltage Directive 73/23/EEC with supplements
Machinery Directive 98/37/EC
EMC Directive 89/336/EEC with supplements
Quality assurance system ISO 9001
Environmental system ISO 14001
UL, cUL, CE, C-Tick and GOST R approvals
RoHS compliant
NSF Certified
DIN40050-9 (IP69K)



Ratings and types

ACS355 - 01U - 02A4 - 2 + A123

Type code

This is the unique reference number (shown above and in column 4, right) that clearly identifies your drive by power rating and frame size. Once you have selected the type code, the frame size (column 5) can be used to determine the drive dimensions, shown on the next page.

Voltages

ACS355 is available in two voltage ranges:

2 = 200 to 240 V

4 = 380 to 480 V

Insert either “2” or “4”, depending on your chosen voltage, into the type code shown above.

Ratings IP20 / UL Open Type / NEMA 1 option			Type code	Frame size
P_N [kW]	P_N [hp]	I_{2N} [A]		
1-phase supply voltage 200 to 240 V units				
0.37	0.5	2.4	ACS355-01U-02A4-2	R0
0.75	1.0	4.7	ACS355-01U-04A7-2	R1
1.1	1.5	6.7	ACS355-01U-06A7-2	R1
1.5	2.0	7.5	ACS355-01U-07A5-2	R2
2.2	3.0	9.8	ACS355-01U-09A8-2	R2
3-phase supply voltage 200 to 240 V units				
0.37	0.5	2.4	ACS355-03U-02A4-2	R0
0.55	0.75	3.5	ACS355-03U-03A5-2	R0
0.75	1.0	4.7	ACS355-03U-04A7-2	R1
1.1	1.5	6.7	ACS355-03U-06A7-2	R1
1.5	2.0	7.5	ACS355-03U-07A5-2	R1
2.2	3.0	9.8	ACS355-03U-09A8-2	R2
3.0	4.0	13.3	ACS355-03U-13A3-2	R2
4.0	5.0	17.6	ACS355-03U-17A6-2	R2
5.5	7.5	24.4	ACS355-03U-24A4-2	R3
7.5	10.0	31.0	ACS355-03U-31A0-2	R4
11.0	15.0	46.2	ACS355-03U-46A2-2	R4
3-phase supply voltage 380 to 480 V units				
0.37	0.5	1.2	ACS355-03U-01A2-4	R0
0.55	0.75	1.9	ACS355-03U-01A9-4	R0
0.75	1.0	2.4	ACS355-03U-02A4-4	R1
1.1	1.5	3.3	ACS355-03U-03A3-4	R1
1.5	2.0	4.1	ACS355-03U-04A1-4	R1
2.2	3.0	5.6	ACS355-03U-05A6-4	R1
3.0	4.0	7.3	ACS355-03U-07A3-4	R1
4.0	5.0	8.8	ACS355-03U-08A8-4	R1
5.5	7.5	12.5	ACS355-03U-12A5-4	R3
7.5	10.0	15.6	ACS355-03U-15A6-4	R3
11.0	15.0	23.1	ACS355-03U-23A1-4	R3
15.0	20.0	31.0	ACS355-03U-31A0-4	R4
18.5	25.0	38.0	ACS355-03U-38A0-4	R4
22.0	30.0	44.0	ACS355-03U-44A0-4	R4

Construction

The type code (shown above) varies depending on the input phasing, voltages, current rating and options. From the tables below, choose the required drive.

01 = 1-phase

03 = 3-phase

B063 = IP66/UL Type 4X enclosure

Ratings IP66/UL Type 4U			Type code	Frame size
P_N [kW]	P_N [hp]	I_{2N} [A]		
3-phase supply voltage 200 to 240 V units				
0.37	0.5	2.4	ACS355-03U-02A4-2 + B063	R1
0.55	0.75	3.5	ACS355-03U-03A5-2 + B063	R1
0.75	1.0	4.7	ACS355-03U-04A7-2 + B063	R1
1.1	1.5	6.7	ACS355-03U-06A7-2 + B063	R1
1.5	2.0	7.5	ACS355-03U-07A5-2 + B063	R1
2.2	3.0	9.8	ACS355-03U-09A8-2 + B063	R3
3.0	4.0	13.3	ACS355-03U-13A3-2 + B063	R3
4.0	5.0	17.6	ACS355-03U-17A6-2 + B063	R3
3-phase supply voltage 380 to 480 V units				
0.37	0.5	1.2	ACS355-03U-01A2-4 + B063	R1
0.55	0.75	1.9	ACS355-03U-01A9-4 + B063	R1
0.75	1.0	2.4	ACS355-03U-02A4-4 + B063	R1
1.1	1.5	3.3	ACS355-03U-03A3-4 + B063	R1
1.5	2.0	4.1	ACS355-03U-04A1-4 + B063	R1
2.2	3.0	5.6	ACS355-03U-05A6-4 + B063	R1
3.0	4.0	7.3	ACS355-03U-07A3-4 + B063	R1
4.0	5.0	8.8	ACS355-03U-08A8-4 + B063	R1
5.5	7.5	12.5	ACS355-03U-12A5-4 + B063	R3
7.5	10.0	15.6	ACS355-03U-15A6-4 + B063	R3

Technical data

ACS355

01U

02A4

2

A123

Mains connection

Voltage and power range	1-phase, 200 to 240 V \pm 10% 0.5 to 3 hp (0.37 to 2.2 kW) 3-phase, 200 to 240 V \pm 10% 0.5 to 15 hp (0.37 to 11 kW) 3-phase, 380 to 480 V \pm 10% 0.5 to 30 hp (0.37 to 22 kW)
Frequency	48 to 63 Hz

Motor connection

Voltage	3-phase, from 0 to U_{SUPPLY}
Frequency	0 to 600 Hz
Continuous loading capability (constant torque at a max. ambient temperature of 40 °C)	Rated output current I_{2N}
Overload capacity (at a max. ambient temperature of 40 °C)	1.5 \times I_{2N} for 1 minute every 10 minutes At start 1.8 \times I_{2N} for 2 s
Switching frequency Selectable	Default 4 kHz 4 to 16 kHz with 4 kHz steps
Acceleration time	0.1 to 1800 s
Deceleration time	0.1 to 1800 s
Braking	Built-in brake chopper as standard
Speed control	
Static accuracy	20% of motor nominal slip
Dynamic accuracy	< 1% s with 100% torque step
Torque control	
Torque step rise time	< 10ms with nominal torque
Non-linearity	\pm 5% with nominal torque

Environmental limits

Ambient temperature	14 to 104 °F (-10 to 40 °C), no frost allowed 122 °F (50 °C) with 10% derating
Altitude	Rated current available at 0 to 3281 ft (0 to 1000 m) reduced by 1% per 328 ft (100 m) over 3281 to 6562 ft (1000 to 2000 m)
Relative humidity	Lower than 95% (without condensation)
Degree of protection	IP20 / optional NEMA 1/ UL type 1 enclosure IP66/UL Type 4X as an option up to 7.5 kW, IP69K available for IP66 variant with compatible cable glands
Enclosure colour	NCS 1502-Y, RAL 9002, PMS 420 C
Contamination levels	IEC721-3-3
Transportation	No conductive dust allowed Class 1C2 (chemical gases)
Storage	Class 1S2 (solid particles)
Operation	Class 2C2 (chemical gases) Class 2S2 (solid particles) Class 3C2 (chemical gases) Class 3S2 (solid particles)

Product compliance

Low Voltage Directive 2006/95/EC
Machinery Directive 2006/42/EC
EMC Directive 2004/108/EC
Quality assurance system ISO 9001
Environmental system ISO 14001
UL, cUL, CE, C-Tick and GOST R approvals
RoHS compliant

Programmable control connections

Two analog inputs	
Voltage signal	
Unipolar	0 (2) to 10 V, $R_{in} > 312 \text{ k}\Omega$
Bipolar	-10 to 10 V, $R_{in} > 312 \text{ k}\Omega$
Current signal	
Unipolar	0 (4) to 20 mA, $R_{in} = 100 \Omega$
Bipolar	-20 to 20 mA, $R_{in} = 100 \Omega$
Potentiometer reference value	10 V \pm 1% max. 10 mA, $R < 10 \text{ k}\Omega$
Resolution	0.1%
Accuracy	\pm 2%
One analog output	0 (4) to 20 mA, load < 500 Ω
Auxiliary voltage	24 V DC \pm 10%, max. 200 mA
Five digital inputs	12 to 24 V, PNP and NPN, programmable DI5 0 to 16 kHz pulse train
Input impedance	2.4 k Ω
One relay output	
Type	NO + NC
Maximum switching voltage	250 V AC/30 V DC
Maximum switching current	0.5 A/30 V DC; 5 A/230 V AC
Maximum continuous current	2 A rms
One digital output	
Type	Transistor output
Maximum switching voltage	30 V DC
Maximum switching current	100 mA/30 V DC, short circuit protected
Frequency	10 Hz to 16 kHz
Resolution	1 Hz
Accuracy	0.2%

Serial communication

CANopen	9-pin D-connector, up to 1 Mbit/s
DeviceNet	5-pin screw type connector, up to 500 kbit/s baud rate
EtherCAT	2 pcs RJ-45 connectors, 100 Mbit/s baud rate
Ethernet/IP	RJ-45 connector, 10/100 Mbit/s baud rate
Fieldbuses	Plug-in type
Refresh rate	< 10 ms (between drive and fieldbus module)
LonWorks	3-pin screw type connector, up to 78 kbit/s baud rate
Modbus-RTU	4-pin screw type connector, up to 115 kbit/s baud rate
Modbus-TCP	RJ-45 connection, 10/100 Mbit/s baud rate
PROFIBUS DP	9-pin D-connector, up to 12 Mbit/s baud rate

Chokes

AC input chokes	External option For reducing THD in partial loads and to comply with EN/IEC 61000-3-12.
AC output chokes	External option To achieve longer motor cables

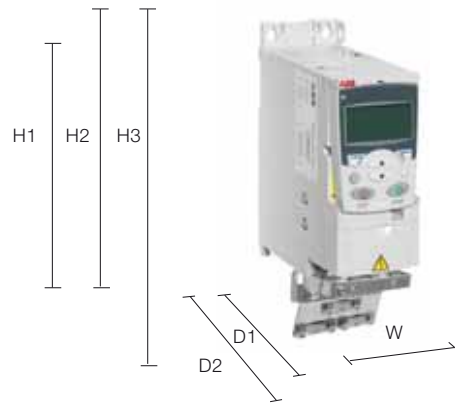
Dimensions and weights

ACS355 - 01U - **02A4** - 2 + A123

Cabinet-mounted drives (IP20 UL Open)

Frame size	IP20 UL Open						
	H1 in	H2 in	H3 in	W in	D1 in	D2 in	Weight lb
R0	6.7	8.0	9.4	2.8	6.3	7.4	2.6
R1	6.7	8.0	9.4	2.8	6.3	7.4	2.6
R2	6.7	8.0	9.4	4.1	6.5	7.5	3.3
R3	6.7	8.0	9.3	6.7	6.7	7.7	5.5
R4	7.1	8.0	9.6	10.2	6.7	7.7	9.7

H1 = Height without fastenings and clamping plate
 H2 = Height with fastenings but without clamping plate
 H3 = Height with fastenings and clamping plate
 W = Width
 D1 = Standard depth
 D2 = Depth with MREL, MPOW or MTAC option



Wall-mounted drives (NEMA 1/UL Type 1)

Frame size	NEMA 1/UL Type 1					
	H4 in	H5 in	W in	D1 in	D2 in	Weight lb
R0	10.1	11.0	2.8	6.7	7.4	3.5
R1	10.1	11.0	2.8	6.7	7.4	3.5
R2	10.1	11.1	4.1	6.7	7.5	4.2
R3	10.2	11.8	6.7	7.0	7.7	6.8
R4	10.6	12.6	10.2	7.0	7.7	11.0

H4 = Height with fastenings and NEMA 1 connection box
 H5 = Height with fastenings, NEMA 1 connection box and hood
 W = Width
 D1 = Standard depth
 D2 = Depth with MREL, MPOW or MTAC option



Wall-mounted drives (IP66/UL Type 4X)

Frame size	IP66/UL Type 4X			
	H in	W in	D1 in	Weight lb
R1	12.0	7.7	11.1	16.9
R3	17.2	9.7	10.9	28.6

H = Height
 W = Width
 D1 = Standard depth



Cooling and fuses

Cooling

ACS355 is fitted with cooling fans as standard. The cooling air must be free from corrosive substances and must not be above the maximum ambient temperature of 104 °F (122 °F with derating). Heat dissipation from IP66/UL Type 4X drive equals to the IP20 UL Open values. For more specific limits see the Technical specification - Environmental limits in this catalog.

Cooling air flow

Type code	Frame size	Heat dissipation		Air flow	
		[W]	BTU/hr ¹⁾	m ³ /h	ft ³ /min
1-phase supply voltage 200 to 240 V units					
ACS355-01U-02A4-2	R0	48	163	- ²⁾	- ²⁾
ACS355-01U-04A7-2	R1	72	247	24	14
ACS355-01U-06A7-2	R1	97	333	24	14
ACS355-01U-07A5-2	R2	101	343	21	12
ACS355-01U-09A8-2	R2	124	422	21	12
3-phase supply voltage 200 to 240 V units					
ACS355-03U-02A4-2	R0	42	142	- ²⁾	- ²⁾
ACS355-03U-03A5-2	R0	54	183	- ²⁾	- ²⁾
ACS355-03U-04A7-2	R1	64	220	24	14
ACS355-03U-06A7-2	R1	86	295	24	14
ACS355-03U-07A5-2	R1	88	302	21	12
ACS355-03U-09A8-2	R2	111	377	21	12
ACS355-03U-13A3-2	R2	140	476	52	31
ACS355-03U-17A6-2	R2	180	613	52	31
ACS355-03U-24A4-2	R3	285	975	71	42
ACS355-03U-31A0-2	R4	328	1119	96	57
ACS355-03U-46A2-2	R4	488	1666	96	57
3-phase supply voltage 380 to 480 V units					
ACS355-03U-01A2-4	R0	35	121	- ²⁾	- ²⁾
ACS355-03U-01A9-4	R0	40	138	- ²⁾	- ²⁾
ACS355-03U-02A4-4	R1	50	170	13	8
ACS355-03U-03A3-4	R1	60	204	13	8
ACS355-03U-04A1-4	R1	69	235	13	8
ACS355-03U-05A6-4	R1	90	306	19	11
ACS355-03U-07A3-4	R1	107	364	24	14
ACS355-03U-08A8-4	R1	127	433	24	14
ACS355-03U-12A5-4	R3	161	551	52	31
ACS355-03U-15A6-4	R3	204	697	52	31
ACS355-03U-23A1-4	R3	301	1029	71	42
ACS355-03U-31A0-4	R4	408	1393	96	57
ACS355-03U-38A0-4	R4	498	1700	96	57
ACS355-03U-44A0-4	R4	588	2007	96	57

¹⁾ BTU/hr = British Thermal Unit per hour. BTU/hr is approximately 0.293 Watts.

²⁾ Frame size R0 with free convection cooling.

Free space requirements

Enclosure type	Space above in	Space below in	Space on left/right in
All frame sizes	3.0	3.0	0.0
IP66 enclosure	3.0	3.0	0.8

Fuses

Standard fuses can be used with ABB general machinery drives. For input fuse connections see table below.

Selection table

Type code	Frame size	IEC Fuses		UL Fuses	
		[A]	Fuse type ^{*)}	[A]	Fuse type ^{*)}
1-phase supply voltage 200 to 240 V units					
ACS355-01U-02A4-2	R0	10	gG	10	UL class T
ACS355-01U-04A7-2	R1	16	gG	20	UL class T
ACS355-01U-06A7-2	R1	16/20 ¹⁾	gG	25	UL class T
ACS355-01U-07A5-2	R2	20/25 ¹⁾	gG	30	UL class T
ACS355-01U-09A8-2	R2	25/35 ¹⁾	gG	35	UL class T
3-phase supply voltage 200 to 240 V units					
ACS355-03U-02A4-2	R0	10	gG	10	UL class T
ACS355-03U-03A5-2	R0	10	gG	10	UL class T
ACS355-03U-04A7-2	R1	10	gG	15	UL class T
ACS355-03U-06A7-2	R1	16	gG	15	UL class T
ACS355-03U-07A5-2	R1	16	gG	15	UL class T
ACS355-03U-09A8-2	R2	16	gG	20	UL class T
ACS355-03U-13A3-2	R2	25	gG	30	UL class T
ACS355-03U-17A6-2	R2	25	gG	35	UL class T
ACS355-03U-24A4-2	R3	63	gG	60	UL class T
ACS355-03U-31A0-2	R4	80	gG	80	UL class T
ACS355-03U-46A2-2	R4	100	gG	100	UL class T
3-phase supply voltage 380 to 480 V units					
ACS355-03U-01A2-4	R0	10	gG	10	UL class T
ACS355-03U-01A9-4	R0	10	gG	10	UL class T
ACS355-03U-02A4-4	R1	10	gG	10	UL class T
ACS355-03U-03A3-4	R1	10	gG	10	UL class T
ACS355-03U-04A1-4	R1	16	gG	15	UL class T
ACS355-03U-05A6-4	R1	16	gG	15	UL class T
ACS355-03U-07A3-4	R1	16	gG	20	UL class T
ACS355-03U-08A8-4	R1	20	gG	25	UL class T
ACS355-03U-12A5-4	R3	25	gG	30	UL class T
ACS355-03U-15A6-4	R3	35	gG	35	UL class T
ACS355-03U-23A1-4	R3	50	gG	50	UL class T
ACS355-03U-31A0-4	R4	80	gG	80	UL class T
ACS355-03U-38A0-4	R4	100	gG	100	UL class T
ACS355-03U-44A0-4	R4	100	gG	100	UL class T

^{*)} According to IEC-60269 standard.

¹⁾ If 50% overload capacity is needed, use the bigger fuse alternative.

Control connections

ACS355 - 01U - 02A4 - 2 + A123

Application macros

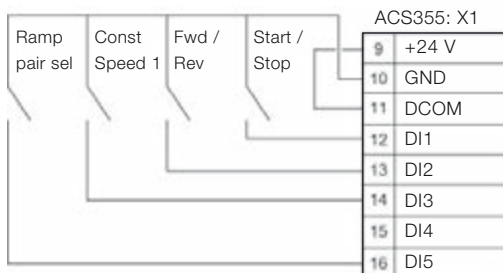
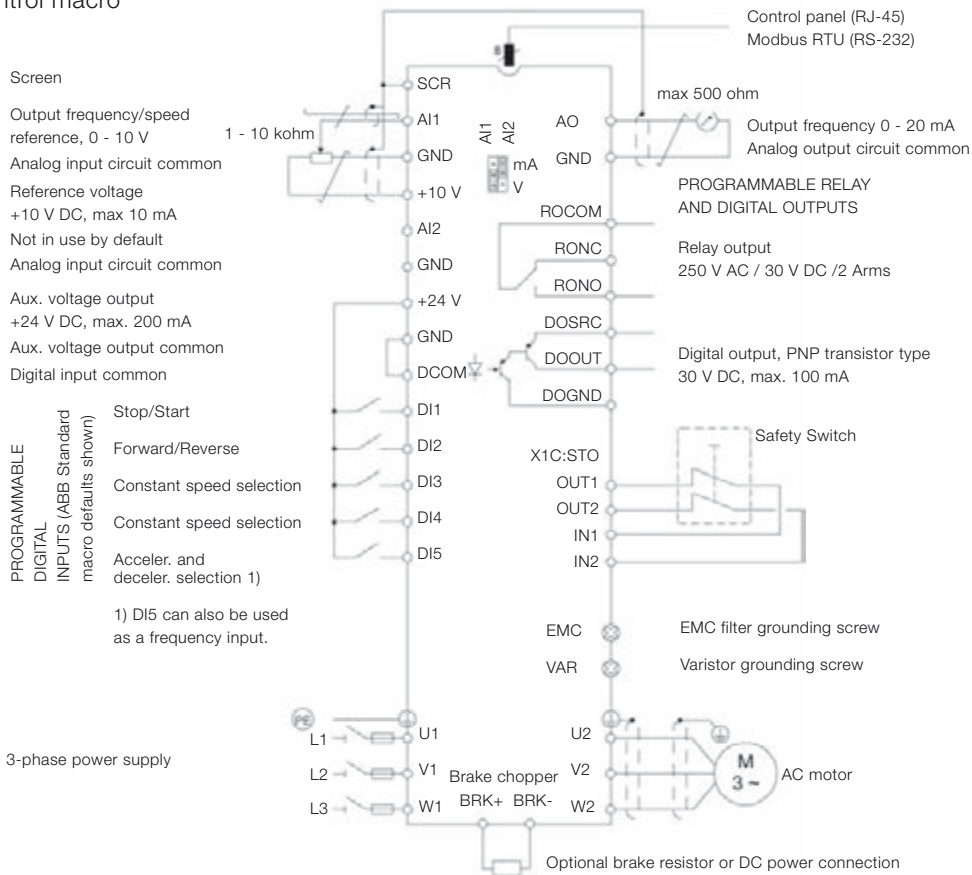
Application macros are preprogrammed parameter sets. While starting up the drive, the user typically selects one of the macros that is best suited for the application. The diagram below gives an overview of ACS355 control connections and shows the default I/O connections for the ABB standard macro.

- 3-wire macro
- Alternate macro
- Motor potentiometer macro
- Hand/auto macro
- PID control macro

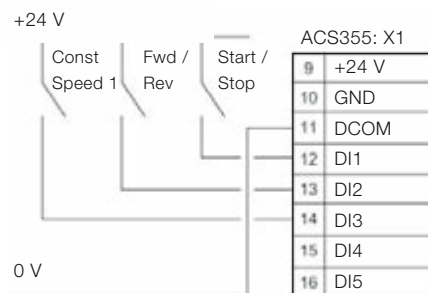
ABB general machinery drives have seven standard macros:

- ABB standard macro
- Torque control macro

In addition to the standard macros the user can create three user macros. The user macro allows the user to save the parameter settings for later use.



Sinking DI configuration (NPN connected).



Sourcing DI configuration (PNP connected) with external power supply.

Options

ACS355 - 01U - 02A4 - 2 + A123

How to select options

The options shown in the table are available within the ACS355 range. The ordering code, which is shown in the second column, replaces the A123 in the type code above. You can order as many options as required, simply by extending the code as necessary.

Options	Ordering code	Description	Model	Availability	
				IP20 drive	IP66 drive
Protection class	¹⁾	NEMA 1/UL type 1 (R0, R1, R2)	MUL1-R1	■	-
	¹⁾	NEMA 1/UL type 1 (R3)	MUL1-R3	■	-
	¹⁾	NEMA 1/UL type 1 (R4)	MUL1-R4	■	-
	B063	IP66/UL type 4X enclosure		-	■
Control panel (choose one option only)	J400	Assistant control panel	ACS-CP-A	□	●
	J404	Basic control panel	ACS-CP-C	□	-
Panel mounting kit	¹⁾	Panel mounting kit	ACS/H-CP-EXT	□	-
	¹⁾	Panel holder mounting kit	OPMP-01	□	-
Potentiometer	J402	Potentiometer	MPOT-01	□	-
Fieldbus (choose one option only)	K451	DeviceNet	FDNA-01	□	□
	K454	PROFIBUS DP	FPBA-01	□	□
	K457	CANopen	FCAN-01	□	□
	K458	Modbus RTU	FMBA-01	□	□
	K466	Ethernet IP / Modbus TCP/IP	FENA-01	□	□
	K452	LonWorks	FLON-01	□	□
	K469	EtherCAT	FECA-01	□	□
Extension modules (choose one option only)	¹⁾	Speed encoder module	MTAC-01	□	-
	¹⁾	Relay output module	MREL-01	□	-
	¹⁾	Auxiliary power extension module	MPOW-01	□	-
Remote monitoring	¹⁾	Ethernet adapter	SREA-01	□	□
Connection options		Cable gland kit (IP66/UL Type 4X)		-	□
	F278	Input switch kit		-	□
Pressure compensation		Pressure compensation valve		-	□
Tools	¹⁾	FlashDrop tool	MFDT-01	□	□
	¹⁾	DriveWindow Light	DriveWindow Light	□	□
External options	¹⁾	Input chokes		□	□ ¹⁾
	¹⁾	EMC filters		□	□ ¹⁾
	¹⁾	Braking resistors		□	□ ¹⁾
	¹⁾	Output chokes		□	□ ¹⁾

- = standard
- = product variant
- = option, external
- = not available

¹⁾ = Ordering with a separate MRP code number.

¹⁾ External options not available in IP66/UL Type 4X protection class.

Options Interface

ACS355 - 01U - 02A4 - 2 + A123

User interfaces

Panel cover

The purpose of the panel cover is to protect the drive's connection surfaces. The ACS355 drive is delivered with a panel cover as standard. In addition there are two alternative control panels available as options.

Basic control panel

The basic control panel features a single line numeric display. The panel can be used to control the drive, set the parameter values or copy them from one drive to another.

Assistant control panel

The assistant control panel features a multilingual alphanumeric display for easy drive programming. The control panel has various assistants and an built-in help function to guide the user. It includes a real time clock, which can be used during fault logging and in controlling the drive, such as start/stop. The control panel can be used for copying parameters for back up or for downloading to another drive. A large graphical display and soft keys make it extremely easy to navigate. The drive with IP66 enclosure has the assistant control panel as standard.

Potentiometer

Potentiometer MPOT-01 with two switches: start/stop and forward/reverse. Polarity is selected with DIP switches. No external power source is needed for the potentiometer.

Panel mounting kits

To attach the control panel to the outside of a larger enclosure, two panel mounting kits are available. A simple and cost-efficient installation is possible with the ACS/H-CP-EXT kit, while the OPMP-01 kit provides a more user-friendly solution, including a panel platform that enables the panel to be removed in the same way as a drive-mounted panel. The panel mounting kits include all hardware required, including 3 m extension cables and installation instructions.



Panel cover (included as standard)



Basic control panel



Assistant control panel



Potentiometer



Panel holder mounting kit OPMP-01

Options Interface

ACS355 - 01U - 02A4 - 2 + A123



Fieldbus module

NEMA 1/UL type 1 kit

Machine interfaces

The plug-in fieldbus modules bring connectivity to major automation systems. A single twisted pair cable avoids large amounts of conventional cabling, thereby reducing costs and increasing system reliability.

ACS355 supports the following fieldbus options:

- CANopen
- DeviceNet
- EtherCAT
- Ethernet IP / Modbus-TCP/IP
- LonWorks
- Modbus-RTU
- PROFIBUS DP

Extension modules

MREL-01

ACS355 has one relay output as standard. The optional MREL-01 module offers three additional relay outputs, which can be configured for different functions with parameters.

MTAC-01

The optional MTAC-01 module offers pulse encoder interface for speed measurement.

MPOW-01

The optional auxiliary power module MPOW-01 enables the drive control circuitry to be operated under all conditions.

Protection and installation

NEMA 1/UL Type 1 kit

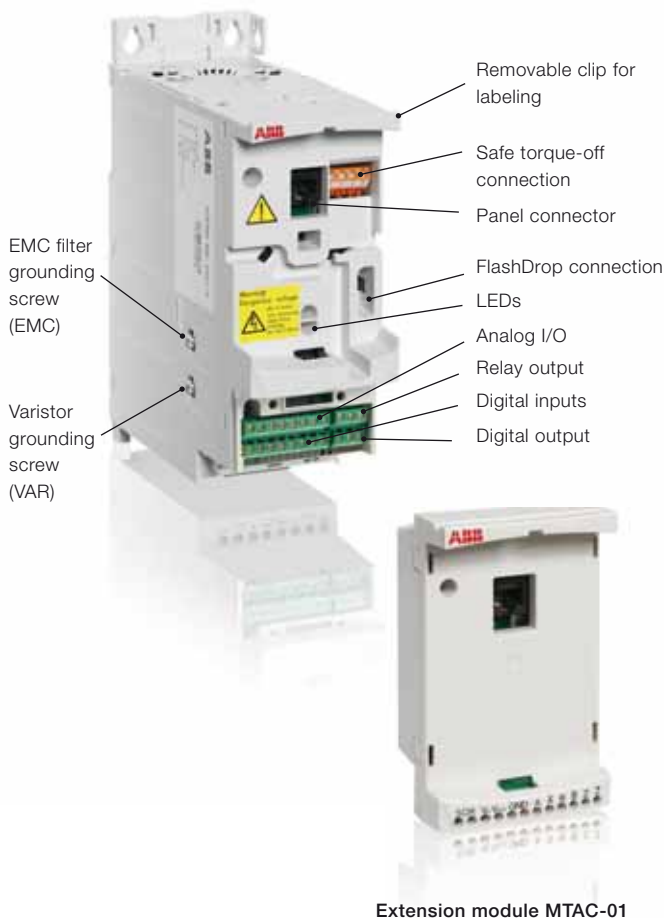
The NEMA 1/UL Type 1 kit includes a connection box for finger protection, conduit tube installation, and a hood for protection against dirt and dust.

Terminal cover

The terminal cover is for protection of the I/O connections.

Clamping plates

The clamping plates are used for protection against electrical disturbances. The clamping plates with clamps are included in the drive package as standard.



Options

Software tools

A separate order line and type code is required for any of these software tool options.

DriveWindow Light

DriveWindow Light is an easy-to-use start-up and maintenance tool for ACS355 drives. It can be used in an offline mode, which enables parameter setting at the office even before going to the actual site. The parameter browser enables viewing, editing and saving of parameters. The parameter comparison feature makes it possible to compare parameter values between the drive and saved parameter files. With the parameter subset you can create your own parameter sets. Controlling of the drive is naturally one of the features in DriveWindow Light. With this software tool, you can monitor up to four signals simultaneously. This can be done in both graphical and numerical format. Any signal can be set to stop the monitoring from a predefined level.

Sequence programming tool

DriveWindow Light allows the user to visually build and manipulate sequence programming parameters that are loaded into the ACS355. The programming is done in a graphical editor which displays each sequence step as an individual block.

Sequence programming enables application specific programming. This new and easy way to preset sequences reduces the need for an external programmable logic control (PLC). In simple applications an external PLC can be left out.

Start-up wizards

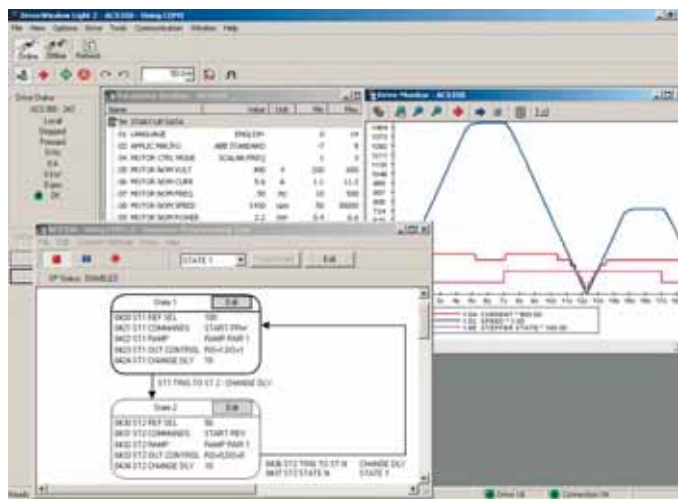
Start-up wizards make the setting of parameters easy. Simply launch the wizard, select an appropriate assistant eg, for setting analog outputs, and all parameters related to this function are shown together with help pictures.

Highlights

- Graphical sequence programming tool for ACS355
- Editing, saving and downloading parameters
- Graphical and numerical signal monitoring
- Drive control
- Start-up wizards

DriveWindow Light requirements

- Windows NT/2000/XP/Vista (32bit)/WIN 7 (32bit)
- Free serial port from a PC
- Free control panel connector



Options

Drive Browser

DriveBrowser is an Ethernet network based drive monitoring and tuning PC tool that supports low voltage machinery, standard, and industrial drives throughout their life cycle. It helps users monitor, maintain and set drive parameters on drives connected to an Ethernet network.

Shares the PLC network

Drives using an Ethernet adapter (RETA-01, RETA-02, or FENA-01) can share the same network where PLC's using Modbus/TCP or EtherNet/IP protocols are connected. This allows users to take advantage of installed networks and reduces additional cabling and infrastructure communication costs.

Drive startup and maintenance

DriveBrowser includes a parameter browser allowing users to view and set individual parameter values. Parameter sets that have been saved can be used to commission new drives. Additionally, users can compare parameter sets to quickly identify changes over time or changes in configurations. Drive signals are also displayed in the parameter browser.

Monitor throughout the drives life cycle

The monitor functionality enables users to graphically view signals and parameters while the drive is running. Users select the parameters and signals and set the graph's minimum and maximum values. The resulting display shows each selected value on a graph while the drive is operating. This data can be used to tune the drive for improved performance. The collected data can be saved to a file.

Quickly assess drive status

The drive status window displays the drives current status, showing the drives control mode, operation status, output frequency, current, power, speed, and the drive state.

Identify drives easily

Once the installed drives are connected to the network using a fieldbus adapter, users may assign meaningful names to each connected drive and identify drives by type.

PC based drive control

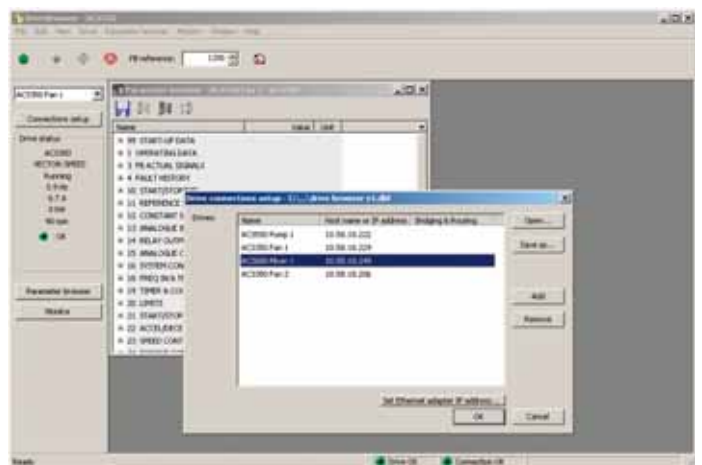
DriveBrowser provides a built-in drive control panel allowing users to reset faults, start, stop, set the direction, and speed reference values of the connected drive. This functionality may be disabled if the controlling PLC does not allow it for networks that are controlled by a PLC.

Highlights

- View and set parameters
- Monitor signals graphically and numerically
- Upload/ download drive parameters
- Uses Ethernet network
- Give easily recognizable names to drives
- Control the drive from the PC
- Used throughout the drive's life cycle

Supported operating systems

- Windows XP/2000/Vista (32bit)/WIN 7 (32bit)



Options

External

A separate order line and type code is required for any of these external options.

FlashDrop tool

FlashDrop is a powerful palm sized tool for fast and easy parameter selecting and setting. It gives the possibility to hide selected parameters to protect the machine. Only the parameters needed in the application are shown. The tool can copy parameters between two drives or between a PC and a drive. All the above can be done without a power connection to the drive – in fact, it is not even necessary to unpack the drive.

DrivePM

DrivePM (drive parameter manager) is a tool to create, edit and copy parameter sets for the FlashDrop tool. For each parameter/group the user has a possibility to hide it, which means that the drive user does not see the parameter/group at all.

DrivePM requirements

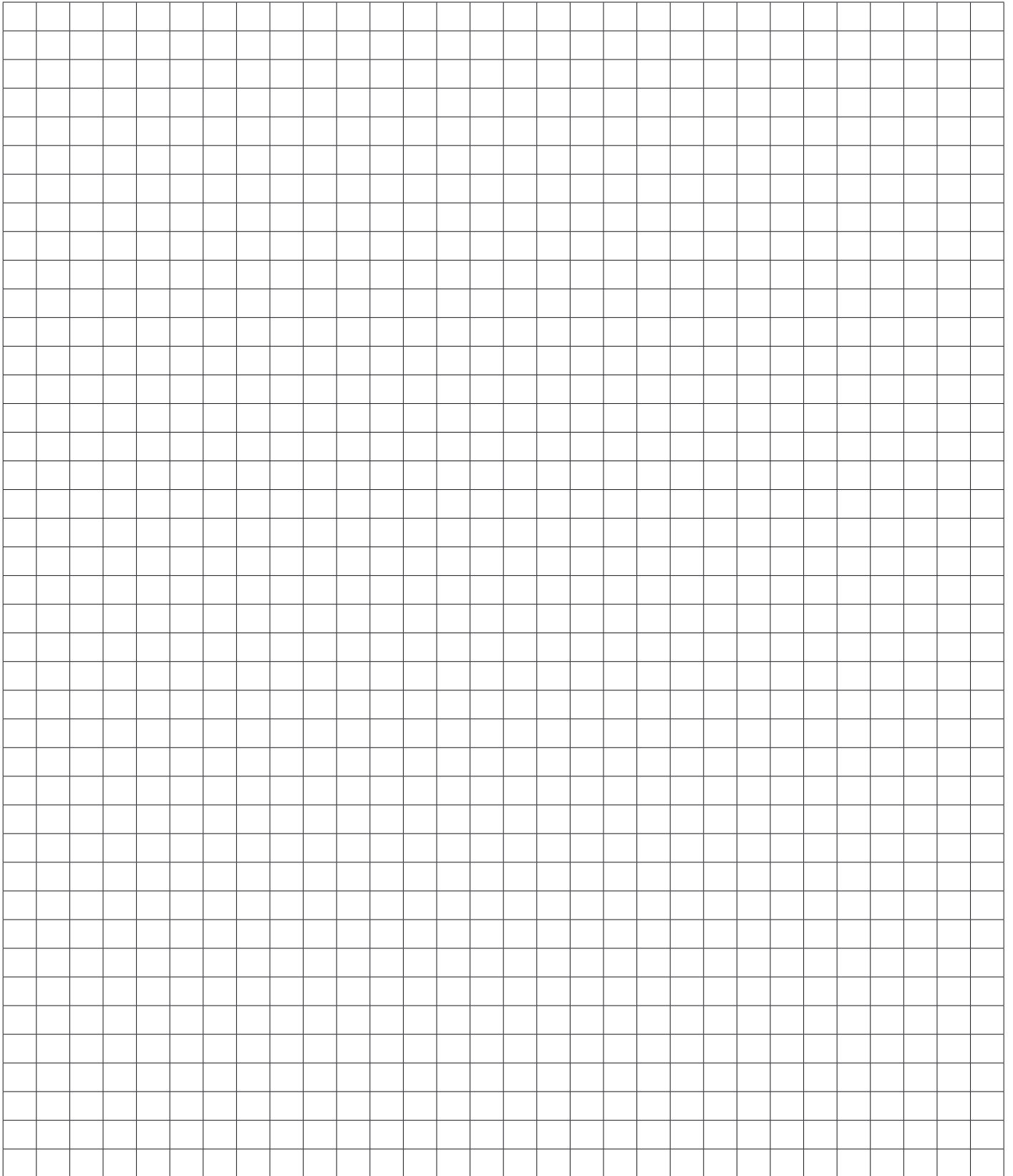
- Windows 2000/XP/Vista
- Free serial port from a PC (32bit)/WIN 7 (32bit)

FlashDrop package includes

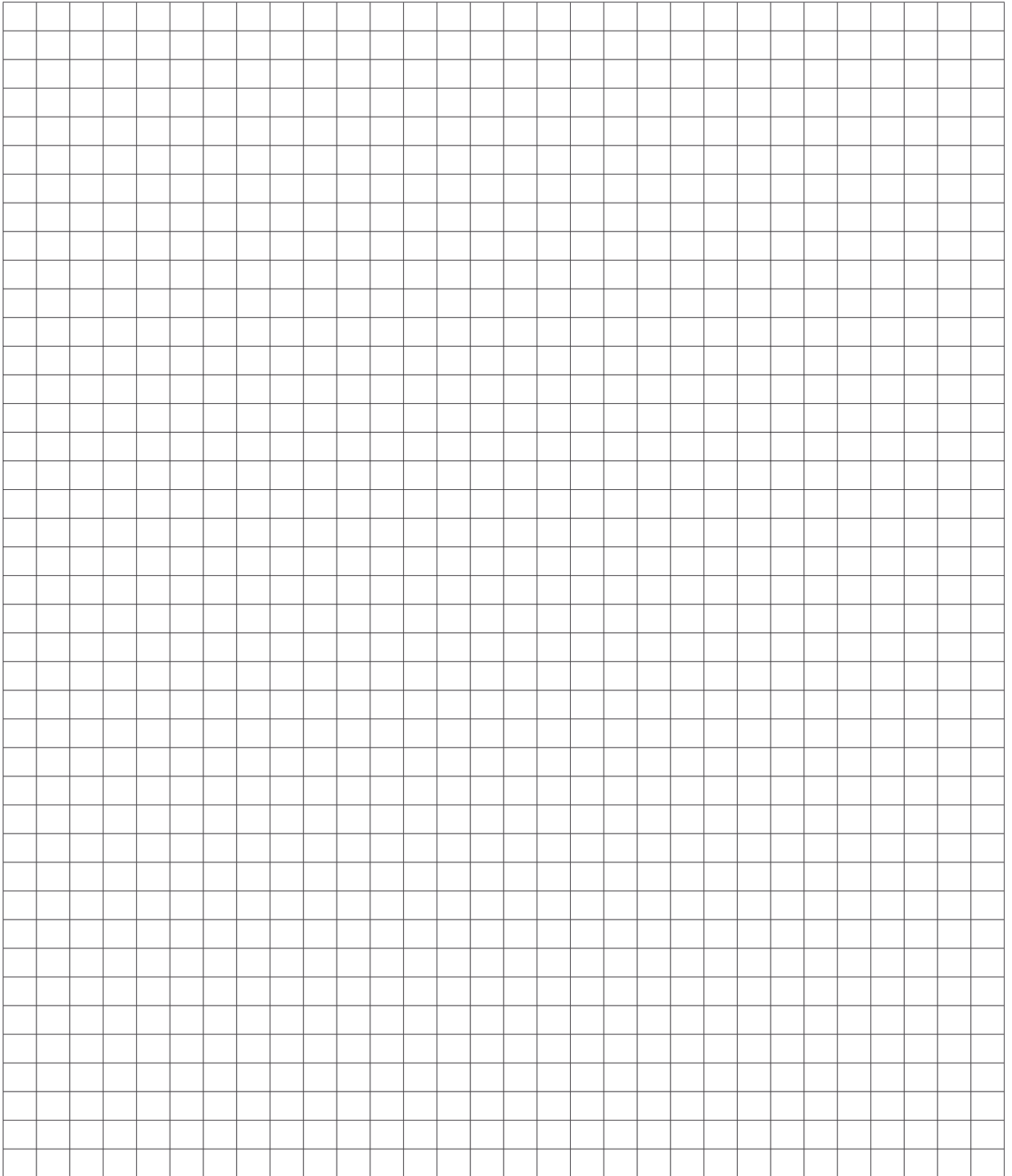
- FlashDrop tool
- DrivePM software on a CD-rom
- User's manual in English and in pdf-format on the CD-rom
- Cable OPCA-02 for connection between the PC and FlashDrop tool
- Battery charger



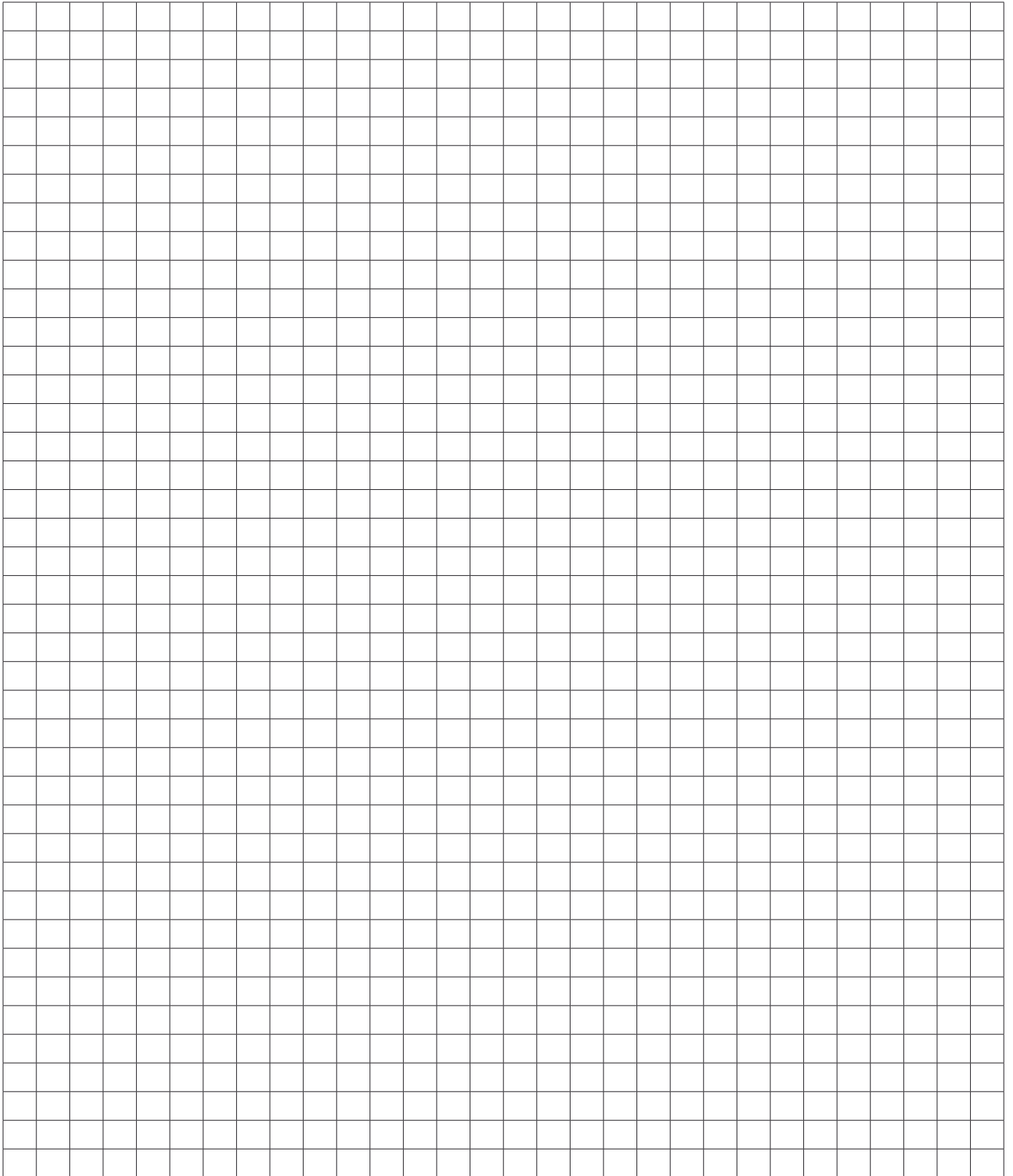
Notes



Notes



Notes



Contact us

www.abb.us/drives

© Copyright 2010 ABB. All rights reserved.
Specifications subject to change without notice.

3AUJA0000081917 REVA US 28.5.2010