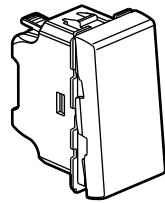
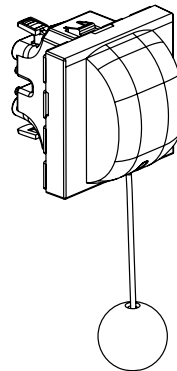


Mosaic™ 6 A pushbuttons

Cat. No.(s): 0 770 30/31/32/40/41/42/44
 0 791 30/40/42 - 0 792 30/32/40/42



0 770 30/31- 0 791 30 - 0 792 30



0 770 44

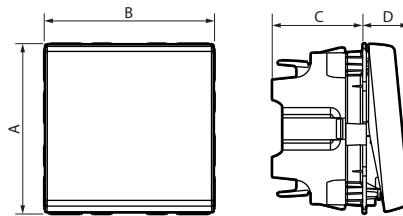
1. USE

General lighting control mechanisms with or without signalling elements (indicator light, label holder).
 The mechanisms can be flush-mounted or surface-mounted.
 To be equipped with plate.

2. RANGE

	Description	White	Anthracite	Aluminium
	Switch - 1 module	0 770 30	0 791 30	0 792 30
	Changeover pushbutton - 1 module	0 770 31	-	-
	Changeover pushbutton with LED indicator light To be equipped with an indicator 1 module	0 770 32	-	0 792 32
	Switch - 2 modules	0 770 40	0 791 40	0 792 40
	Changeover pushbutton - 2 modules	0 770 41	-	-
	Changeover pushbutton with LED indicator light To be equipped with an indicator 2 modules	0 770 42	0 791 42	0 792 42
	Changeover pushbutton NO-NC with pull-cord 1.5 m 2 modules	0 770 44	-	-

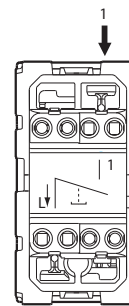
3. OVERALL DIMENSIONS (mm)



References	A	B	C	D
0 770 30/31/32 0 791 30 - 0 792 30/32	45	22.5	24	12.3
0 770 40/41/42 0 791 40/42 - 0 792 40/12	45	45	24	12.3
0 770 44	45	45	28.4	22

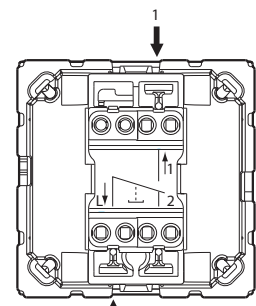
4. CONNECTION

Automatic terminals
 Terminal capacity: 2 x 2.5 mm²
 Stripping length: 12 mm



Connect the phase in L

0 770 30/40 - 0 791 30
 0 792 30/40



Connect the phase in L

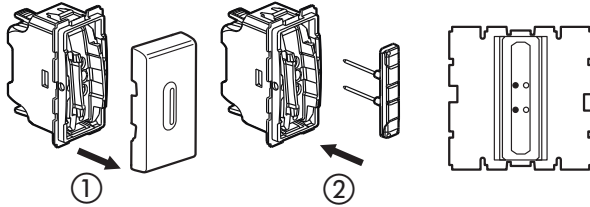
0 770 31/32/41/42/44
 0 791 40/42 - 0 792 32/42

5. WIRING

Catalogue numbers: 0 770 32/42 - 0 792 32/42 - 0 791 42

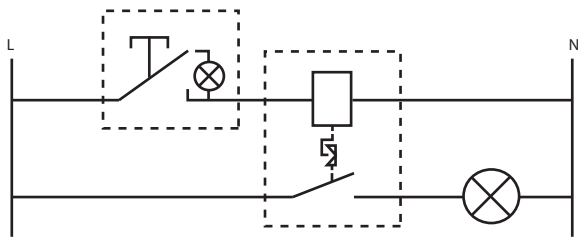
Indicator function: Only possible with support frame Cat. No. 0 802 62.

Illuminated function: Illuminates the pushbutton in the dark.



1 - Unclip the rocker

2 - Insert indicator light Cat. No. 0 676 86 or Cat. No. 0 676 87



6. TECHNICAL CHARACTERISTICS

■ 6.1 Mechanical characteristics

Impact tests: IK 04

Protection against solid bodies and liquids: IP 31 D

■ 6.2 Material characteristics

- Rocker: ABS

- Base: PC

- Rocker support: PC

- Halogen free

- UV resistant

Self-extinguishing:

+ 850°C / 30 s for insulating components holding in place live parts.

+ 650°C / 30 s for the other insulating components.

■ 6.3 Electrical characteristics

Voltage: 250 V~

Current: 6 A

■ 6.4 Climatic characteristics

Storage temperature: - 10° C to + 70° C

Operating temperature: - 5° C to + 35° C

7. CLEANING

Surface cleaning with a cloth.

Do not use: acetone, tar remover, trichloroethylene.

■ 7.1 Resistance to cleaning agents

Resistance to the following agents: Hexane (EN 60669-1), Methylated spirits, Soapy water, Diluted ammonia, Diluted pure bleach 10%, Glass cleaning substance, Pre-impregnated wipes.

■ 7.2 Resistance to hospital-type cleaning agents.

Resistance to the following agents: Anios, Surfanos, Bactillysine, Diluted hydrogen peroxide (35%).

Caution: A preliminary test should be carried out if other specific cleaning products are to be used.

8. ACCESSORIES

Lights for pushbuttons with indicator light:

Pushbuttons	Illuminated
0 770 32	
0 770 42	
0 791 42	0 676 86 (230 V / 0.15 mA)
0 792 32	0 676 87 (12/24/48 V)
0 792 42	

9. CONFORMITY AND APPROVALS

Compliance with standards of installation and manufacturing.

See e.catalogue.